



HydroBat

HIGH RESOLUTION MULTIBEAM ECHO SOUNDER SYSTEM

HydroBat is an entry-level multibeam operating at 160kHz which covers a wide swath of 3.4x depth. A single integrated transducer may easily be deployed over the side of a small boat or permanently mounted as needed. With an advanced autopilot, high ping rate and a combination of amplitude and phase bottom detect, HydroBat produces high quality bathymetry data exceeding international standards. Compact and portable, HydroBat is ideal for ports, harbours and inshore survey operations where cost is a critical factor.

A highly integrated sonar processor with PDS2000 software completes the package and allows for fast, easy, hassle free installation & integration.

Like all RESON multibeams, HydroBat is backed up by the best service & support in the industry and over 20 years of experience building the world's premier shallow water multibeam systems.

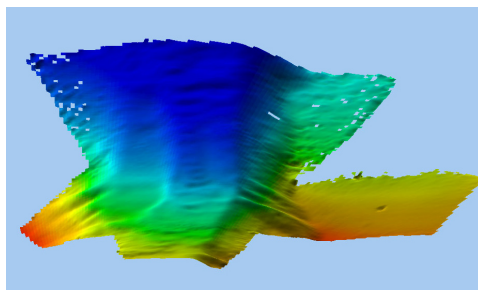
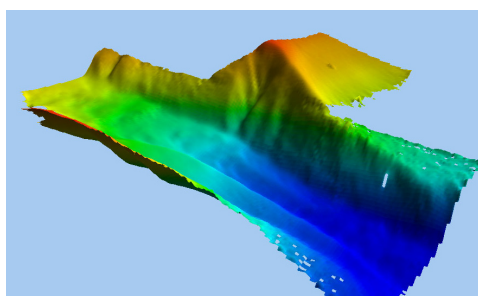
PRODUCT LOGBOOK



EFFICIENT	Generates high quality data fast
FREQUENCY	160 kHz frequency
SWATH	120°
BEAMS	112
PC HARDWARE	Included
SOFTWARE	PDS version V060
OPTION	PDS2000 version V090
	GPS, motion & heading sensor
	Sound velocity probe
	Mounting brackets & fairing kits

HYDROBAT SYSTEM SPECIFICATIONS

FREQUENCY	160 kHz
SWATH WIDTH	120°
NUMBER OF BEAMS	112
MIN RANGE	1m
MAX RANGE	200m
PING RATE	20Hz +
WEIGHT	19kg air (includes cable)
ROLL STABILISATION	Included
AUTOPILOT	Included
INTEGRATED SOFTWARE	PDS2000 included
PC HARDWARE	Included
SONAR PROCESSOR	19" rack mount chassis
MONITOR	EIZO S1901 HK Monitor, 19in, TFT, 1280 x 1024
VIDEO CARD	Capable of driving two high resolution monitors
MOTION SENSOR	SMC-108 (only included in the HydroBat composite configuration)
GPS	Trimble SPS461 (only included in the HydroBat composite configuration)
CABLE LENGTH	10m
SHIP CASE	Wooden case for the basic configuration, reusable cases for the composite configuration



WHY CHOOSE A HYDROBAT?

- Very high performance and flexibility for the money
- Large range of SeaBat systems based on the same platform, if more sonar systems are required
- Adjustable swath width maintaining maximum number of depth sounding
- Installation support
- Services and Support Agreement (SSA)

For more details visit www.reson.com or contact your local RESON Office.

2010©RESON

RESON A/S
Denmark
Tel: +45 4738 0022
reson@reson.com

RESON Inc.
U.S.A.
Tel: +1 805 964-6260
sales@reson.com

RESON OFFSHORE Ltd.
Scotland U.K.
Tel: +44 1224 709 900
sales@reson.co.uk

RESON GmbH
Germany
Tel: +49 (0) 431 720 7180
reson@reson-gmbh.de

RESON B.V.
The Netherlands
Tel: +31 (0) 10 245 1500
info@reson.nl

RESON Pte. Ltd.
Singapore
Tel: +65 6725 9851
singapore@reson.com